

Optional Parts for Full-automatic Controlled Line



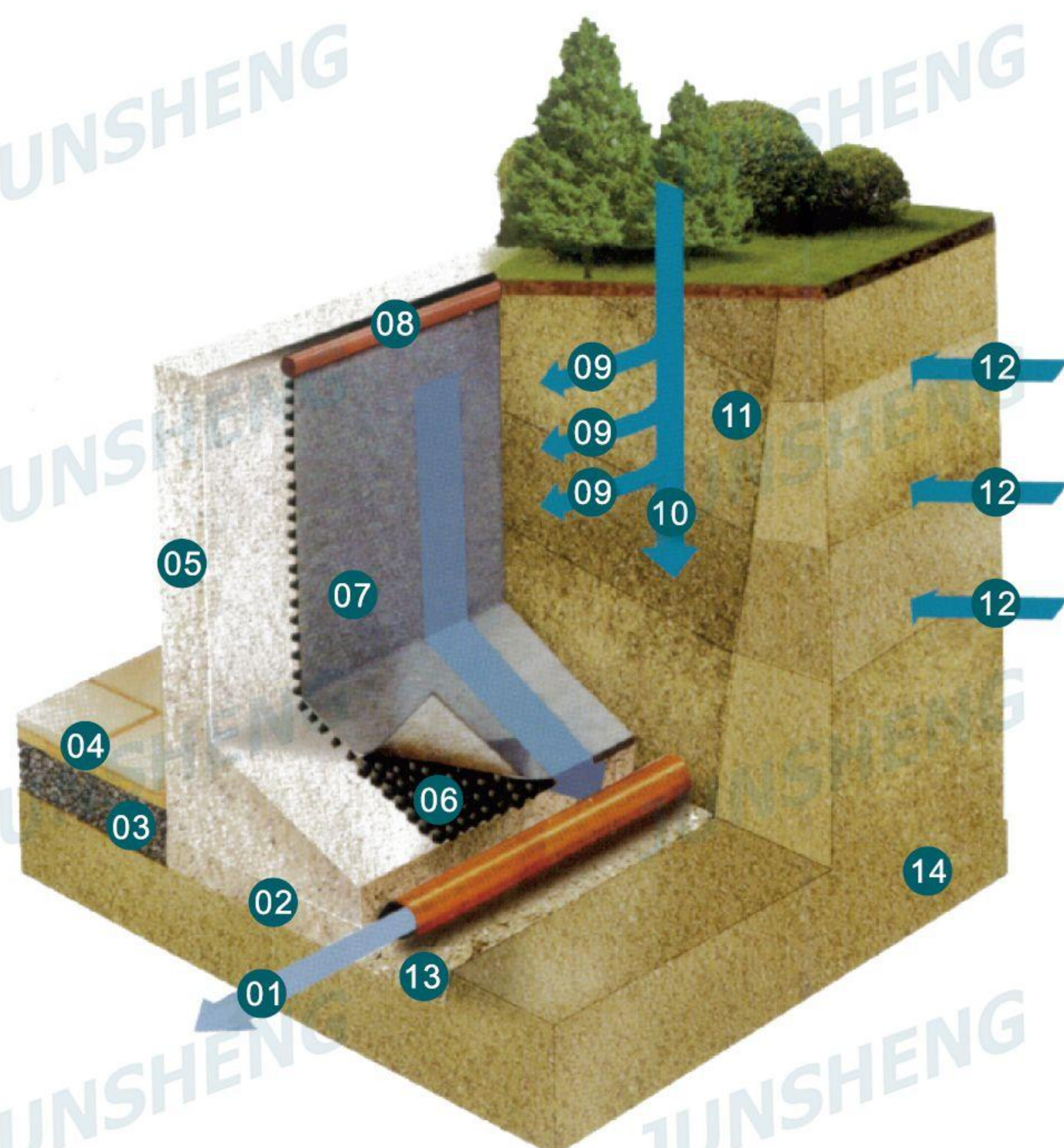
Components



Components

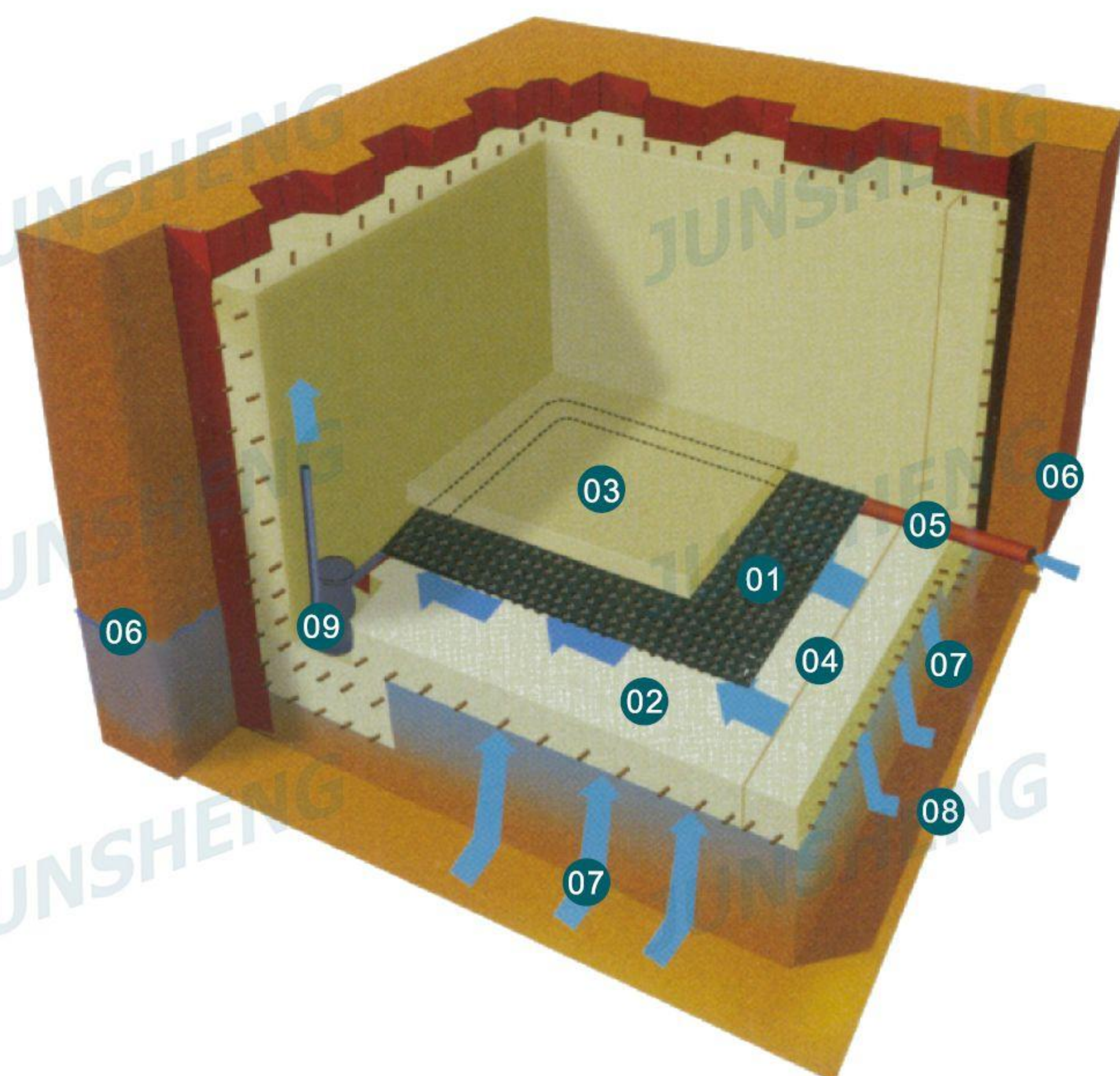


Basement waterproofing and drainage protecting system



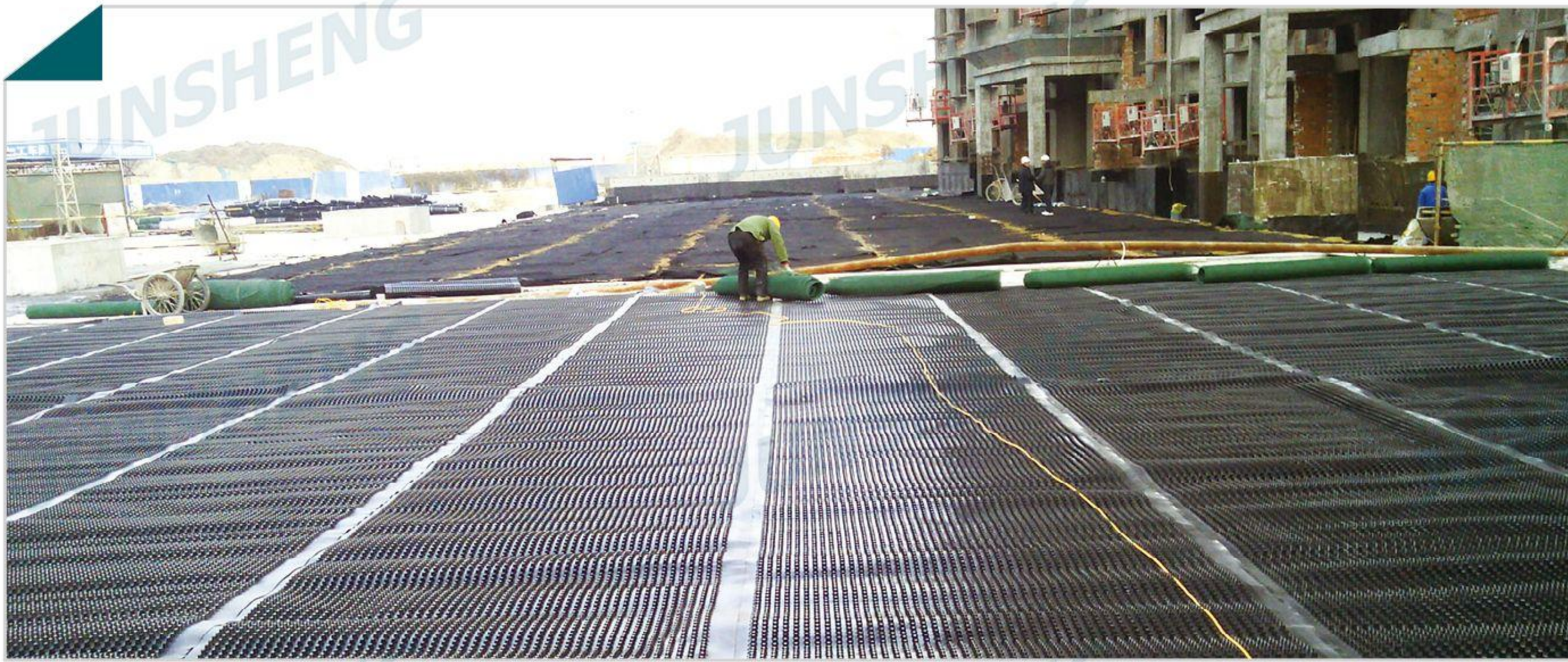
- 01 Aqueduct
- 02 Concrete bottoming
- 03 Coarse grading layer
- 04 Fine grading layer
- 05 Retaining wall(outer wall)
- 06 HDPE Drainage Panel
- 07 Filtering layer
- 08 Batten lin-end
- 09 Side stream osmosis water of earth's surface
- 10 Vertical osmosis water of earth's surface
- 11 Backfilled soil layer(layering backfilled)
- 12 Floating and flowing water in rock stratum
- 13 Grading filtering layer
- 14 Original soil layer

Indoor bottom plate of underground construction



- 01 HDPE Drainage Panel
- 02 Foundation laminate-banked
- 03 Indoor ground reinforced concrete
- 04 Expansive joint
- 05 Drainage pipeline
- 06 Temporal underground water level
- 07 Temporal stream
- 08 Bottom layer of nature soil
- 09 Well pump

Application



- Landscape engineering

Underground garage roof plant, green roof, football field, golf course, outdoor bathing place, plant in the salt and alkali place, etc.

- Constructional engineering

Anti-seepage of floor layer in the underground, anti-seepage for building foundation of superstructure sub layer, basement interiors and exteriors layer.

- Traffic engineering

Tunnel, highway, railroad bed, dam, revetment drainage.

- Municipal engineering

Metro, road bed, landfill.

- Decoration project

Moistureproof, sound insulation, damping and threading.

- Punched holes and laminated with geotextile

The Fabric permits ground water to permeate, yet prevents the adjacent soil from washing through the core.